



OHST 
medical technology

ZEN Knee – Tibia Modular Mobile Bearing & Fixed Bearing

BEST QUALITY

MADE IN GERMANY

ZEN KNEE – TIBIA MODULAR MOBILE BEARING & FIXED BEARING

cemented treatment

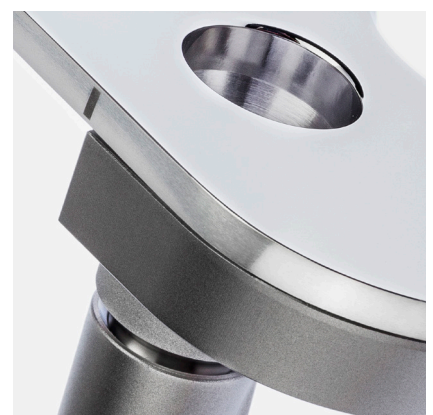
ZEN Tibia Modular increases the range of application of the proven ZEN Knee system. The modular ZEN tibial components are designed for use in primary and revision surgeries of patients in whom secure fixation of the standard tibial implants is no longer ensured due to insufficient bone quality or minor bone loss of the proximal tibia.

The aim is to restore the anatomical alignment and functional stability of the knee joint and of the joint line. The modular ZEN tibial system for cemented fixation offers a range of treatment options thanks to a selection of stem extensions and augments.

The tibial plateau and the stem extension are attached to one another via a fixed cone screw connection which

is securely fastened with a torque screwdriver. Stem extensions are supplied as straight and as offset versions, which allows for optimal treatment of the varying anatomical requirements of patients.

The stem screw is supplied with the tibial plateau. The tibial plateau is manufactured using CoCrMo casting alloy (ISO 5832-4). It is also available as a variant with titanium-niobium-nitride coating. The stem extensions as well as the augments and stem screw are manufactured using Ti6Al4V forge alloy in accordance with ISO 5832-3. The centralizer is made using UHMWPE (ISO 5834-2).



PRODUCT DESCRIPTION

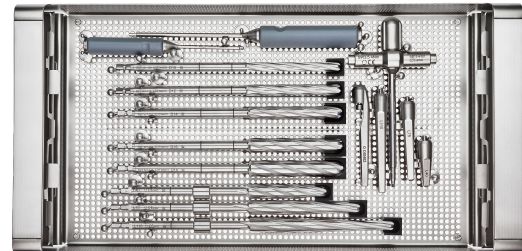
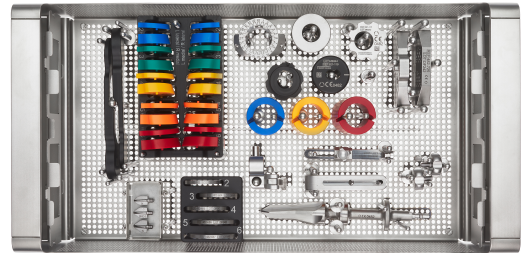
- Sizes:
5 sizes
- Anchoring:
cemented
- Components & Material:
Tibia Modular (MB & FB)
CoCrMo (ISO 5832-4)
opt. with TiN/BN coating
- Stem extension**
Ti6Al4V (ISO 5832-3)
- Centralizer**
UHMWPE (ISO 5834-2)
- Augment**
Ti6Al4V (ISO 5832-3)

INSTRUMENTS

We have developed two compact instrument trays that complement the ZEN Knee Mobile and Fixed Bearing Sets and ensure the procedure is carried out safely. These instrument sets can be used to implant both Tibial Modular variants (Mobile and Fixed Bearing).

The ergonomic silicone handles ensure easy handling and meet all cleaning and sterilisation requirements.

The instruments can be supplied in Monolite trays. These trays are manufactured from high-quality stainless steel in one piece. Their high thermal resistance, combined with the lids acting as closures, makes cleaning and sterilisation particularly easy. The system is characterised by its low weight and can be stacked as required.



CE 0482